



FOXMOOR
PRIMARY SCHOOL

Foxmoor Primary School Early Help Offer

Here at Foxmoor Primary School we understand that family life can sometimes be complicated and that from time to time families need support when difficulties arise. Our staff are very experienced at sign posting parents to the right support and we work closely with a range of professional agencies. Below you will find a comprehensive list of the support we can offer.

Who provides Early Help support in school?

The answer is any member of staff; usually, the class teacher in the first instance as they have most contact with the children. All staff receive safeguarding training to ensure that advice given is in the best interests of keeping children safe. The school telephone number is 01453 757251.

If support from a Key Stage Leader is required: Mrs Paula Rimmer (EYFS Lead); Mrs Tina Draper (Assistant Headteacher and KS1 Lead); and Mr Adam Halsey (Assistant Headteacher and KS2 Lead) all have up to date Local Authority safeguarding training.

Mr Richard Bridgewater is the Designated Safeguarding Lead (DSL); in addition, Mrs Val Tuck and Mr Adam Halsey are both Deputy Safeguarding Leads (DDSL).

Mrs Nicki Nunn is our Special Educational Needs Coordinator. She can be contacted via the school office or by email at sendco@foxmoor.gloucs.sch.uk

What other professionals and agencies are involved?

The following pages outline the types of Early Help which may be required as well as listing agencies and web-based information all designed to offer support quickly and effectively.

Foxmoor Primary School Early Help Offer

| | |
|--|--|
| <p>Universal source of help for all families in Gloucestershire:</p> <p>Gloucestershire Family Information Service (FIS)</p> | <p>Gloucestershire Family Information Service (FIS) advisors give impartial information on childcare, finances, parenting and education. FIS are a useful source of information for parents and professionals. They support families, children and young people aged 0-19 years of age (25 for young people with additional needs) and professionals working with these families. They can help link parents up with other organisations that might be able to help or provide the information themselves e.g. parents could ask them about holiday clubs for your children across Gloucestershire. Contact the FIS by emailing: familyinfo@gloucestershire.gov.uk</p> <p>Or telephone: (0800) 542 0202 or (01452) 427362. FIS also have a website which has a wealth of information to support many issues such as childcare and support for children with disabilities. www.glosfamilies.org</p> <p>For information for Children and Young People with Special Education Needs and Disabilities (SEND) go to the SEN and Disability 'Local Offer' website: www.glosfamilies.org.uk/localoffer</p> <p>More information can be found by following the link; http://sendiassglos.org.uk/</p> |
| <p>GSCB (Gloucestershire Safeguarding Children's Board)</p> | <p>http://www.gscb.org.uk</p> <p>Important information for parents and professionals across Gloucestershire in relation to keeping children safe and avenues of support including early help options.</p> |
| <p>Foxmoor Primary School universal support for all pupils and families.</p> | <p>All members of staff are available in a pastoral capacity should parents have any concerns about anything at all. Usually the child's Class Teacher would be the first contact, followed by the Assistant Headteachers or the Headteacher. Staff may not have the answer but will try to find a solution or sign post parents or other professionals in the right direction. Parents can talk directly with staff or make contact with the school office to arrange an appointment. The school office number is 01452 757251. Email – admin@foxmoor.gloucs.sch.uk</p> |
| <p>Home-school support</p> | <p>All of our Early Help is offered in partnership with parents, families, guardians and carers.</p> |
| <p>E-safety</p> | <p>E-safety is a key part of the ongoing (PSHE/SMSC/SRE) curriculum.</p> <p>Helpful websites for teaching staff and parents:</p> <p>PACE (parents against child exploitation) UK www.paceuk.info/ is a useful website to engage parents with e-safety issues.</p> <p>www.thinkuknow.co.uk/parents http://educateagainsthate.com www.internetmatters.org https://ico.org.uk</p> |

| | |
|--|--|
| <p>Family Support Work</p> | <p>All members of the Senior Leadership Team are trained to DSL Level, and have had training in Child Protection. The DSL or DDSL attends Child Protection meetings, Child in Need meetings and multi-agency meetings. They will sign post families to other services if further support is required and support the children's social, emotional needs.</p> |
| <p>Bullying (including cyber-bullying)/child death/suicide prevention. (Also referred to as peer on peer abuse.)</p> | <p>All Gloucestershire schools including Foxmoor Primary School are committed to tackling bullying. We want to know immediately if there any issues with bullying at school so that it can be addressed. It could be that bullying is related to a child's home or school. School can also offer bespoke lessons on anti-bullying for anyone who has suffered bullying to encourage behaviours that might prevent it in the future (e.g. assertiveness) or to boost self-esteem. We have a series of teaching resources produced by the Gloucestershire Healthy Living and Learning Team (www.ghll.org.uk) to support this.</p> <p>In serious cases of bullying parents should contact the police; particularly if there are threats involved. In an emergency call 999.</p> <p>Other sources of help and advice are: www.gscb.org (Gloucestershire Safeguarding Children's Board), http://www.bullying.co.uk</p> <p>Gloucestershire Healthy Living and Learning team provide alerts and resources in relation to supporting young people being bullied. Education about bullying is an integral part of the curriculum www.ghll.org.uk</p> <p>www.onyourmindglos.nhs.uk – A Gloucestershire website that also covers bullying as a topic and where to go for help.</p> |
| <p>Children or young people with multiple needs (vulnerable) or multiple needs (complex) requiring multi-agency input or assessment.</p> | <p>Within Gloucestershire Early Help Partnership (Co-ordinated by Families First Plus) provide multi-agency support for children and families. A phone call to discuss a possible referral is helpful before making written referral. Parents must consent to a referral. School actively seek support when appropriate. Referrals go to the Early Help Partnership (representation from Education, health, social care etc. and referring agencies are encouraged to attend. All agencies should view themselves as part of this Early Help Partnership. The referral meeting is a multi-agency discussion to decide the best way forward: Early Help</p> <p>Partnership/Families First Plus: Cheltenham: cheltenhamearlyhelp@gloucestershire.gov.uk Tel:01452 328161</p> <p>Gloucester: gloucesterearlyhelp@gloucestershire.gov.uk Tel:01452 328076</p> <p>Stroud: stroudearlyhelp@gloucestershire.gov.uk Tel: 01452 328130</p> |

Tewkesbury:
tewkesburyearlyhelp@gloucestershire.gov.uk
 Tel: 01452 328 250

Cotswold: cotswoldearlyhelp@gloucestershire.gov.uk
 Tel: 01452 328101

FOD: forestofdeanearlyhelp@gloucestershire.gov.uk
 Tel: 01452 328048

These teams are made up of the following professionals
 Early Help Coordinators: Community Social Worker and Family Support Workers. They all work together from one base so they can recognise and respond to local needs and act as a focal point for coordinating support for vulnerable children, young people and their families

Children or young people with multiple needs (vulnerable) or multiple needs (complex) requiring multi-agency input or assessment.

Support provided includes: Support for school and community based lead professionals working with children and families; Collaboration with social care referrals that do not meet their thresholds, to co-ordinate support within the community; Work in partnership to support children with special educational needs in school; Advice and guidance from a social work perspective on a 'discussion in principle basis' ; Signpost children with disabilities and their families to access activities and meet specific needs; Advice and guidance to lead professionals and the provision of high quality parenting and family support services to families.

Youth Support Team (YST): The Youth Support Team provide a range of services for vulnerable young people aged between 11 - 19 (and up to 25 for young people with special needs), including: Youth offending; Looked after children; Care leaver's support services (for those aged 16+); Early intervention and prevention service for 11 - 19 year olds; Support for young people with learning difficulties and/or disabilities; Positive activities for young people with disabilities; Support with housing and homelessness; Help and support to tackle substance misuse problems and other health issues; Support into education, training and employment; Support for teenage parents –
 For General Enquiries: T: 01452 426900 E: info.glos@prospects.co.uk To make a referral: T: 01452 427923
 Gloucestershire Young Carers

Offer support and activities for children who act as carers for adults in the home on a referral basis.
 Tel 01452 733060; www.glosyoungcarers.org.uk

Drug concerns

www.infobuzz.co.uk/ Info Buzz provides individual targeted support around drugs and emotional health issues, development of personal and social skills, and information and support around substance misuse.

Drugs education is covered in the school curriculum. The Life Education Bus visits as part of this provision. PSHE/SMSC curriculum safety around medicine, danger of drugs as a preventative measure.
www.onyourmind.nhs.uk gives advice on drug/alcohol misuse.

| | |
|---|---|
| Fabricated and induced illness (FII) | http://www.nhs.uk/Conditions/Fabricated-or-induced-illness for information on behaviours and motivation behind FII. Any professionals suspecting FII must involve the Police, Social Services and follow the child protection procedures outlined in the safeguarding policy. |
| Mental health concerns | www.onyourmindglos.nhs.uk – a newly launched website by Gloucestershire as part of the Future in Mind programme. This website is good for young people, parents and professionals in terms of help with mental health issues and where to go for help. <ul style="list-style-type: none"> • Referral to school nurses may be appropriate. • Referral to CYPS (Gloucestershire’s mental health services) via your own GP. • For children/young people/adults with existing mental health difficulties concerns should be discussed with the existing medical professionals (consultant psychiatrists). <p>In an emergency, call 999 or 111. CYPS Practitioner advice line (for professionals to call) Tel: 01452 894272.</p> <p>Teens in Crisis (TIC+) Offer support, counselling and advice for children aged 8+ who are struggling with social, emotional and mental health needs. Tel 01594 372777 www.ticplus.org.uk</p> |
| <p>Child Sexual exploitation (CSE)</p> <p>CSE is a form of sexual abuse. It occurs where an individual or group takes advantages of an imbalance of power to coerce, manipulate or deceive a child or young person under the age of 18 into sexual activity (a) in exchange for something the victim needs or wants and /or (b) for the financial advantage or increased status of the facilitator. The victim may have been sexually exploited even if the sexual activity appears consensual. Child sexual exploitation does not always involve physical contact; it can also occur through the use of Technology. Child sexual exploitation DfE Feb 2017</p> | <p>CSE screening tool (can be located on the GSCB website: www.gscb.org.uk/article/113294/Gloucestershire-procedures-and-protocols)</p> <p>This should be completed if CSE suspected. THIS CAN APPLY TO BOYS and GIRLS. Clear information about Warning signs, the screening tool and Gloucestershire's multi-agency protocol for safeguarding children at risk of CSE are at www.gscb.org</p> <p>Referrals should be made to Gloucestershire social care and the Gloucestershire Police.</p> <p>Gloucestershire Police CSE Team: The CSE team sits within the Public Protection Bureau Single agency team (Police) All referrals to go to the Central Referral Unit 01242 247999</p> <p>Further information: National Working Group (Network tackling Child Sexual Exploitation) www.nationalworkinggroup.org and PACE UK (Parents Against Child Sexual Exploitation) www.paceuk.info</p> |
| Teenage relationship abuse | <p>www.gov.uk -Home office ‘teachers’ guide to violence and abuse in teenage relationships.’ All violence or suspected violence should be reported the police and/or social care as appropriate. GDASS (Gloucestershire Domestic Abuse Support Service) can be referred to for support.</p> <ul style="list-style-type: none"> • Young person’s GDASS leaflet https://www.gdass.org.uk/lgeneral.pdf • Gloucestershire Take a Stand – www.glostakeastand.com • Prevention: Curriculum resources – www.gdll.org.uk |

| | |
|--|--|
| <p>Domestic abuse</p> | <p>The GSCB (Gloucestershire Safeguarding Children's board) have published a Domestic Abuse pathway for educational settings which is on the GSCB website. If a child or young person is suspected of living at home with a domestically abusive parent or if a young person has domestic abuse in their own relationship then the usual procedures should be followed and a referral made to the children's helpdesk (Tel: 01452 426565). The response will vary according to the age of the young person so that the appropriate agencies are involved.</p> <p>Gloucestershire Domestic Abuse Support Service (GDASS) www.gdass.org.uk</p> <p>MARAC Gloucestershire Constabulary: Multi Agency Risk Assessment Conferences (MARACs) prioritise the safety of victims who have been risk assessed at high or very high risk of harm. The MARAC is an integral part of the Specialist Domestic Violence Court Programme, and information will be shared between the MARAC and the Courts, in high and very high risk cases, as part of the process of risk management.</p> <p>Gloucestershire Unborn Baby Protocol: Research indicates that young babies are particularly vulnerable to abuse but that work carried out in the antenatal period can help minimise harm if there is an early assessment, intervention and support. Working Together (2018) specifically identifies the need of the Unborn Child. Professionals should read and act upon the unborn baby protocol if there is suspected domestic violence and a pregnancy. The unborn baby protocol can be found at www.gscb.org</p> |
| <p>Faith abuse</p> | <p>Judith Knight; Diocese of Gloucester Head of Safeguarding/faith abuse contact jknight@glosdioc.org.uk</p> <p>For other faith groups contact Gloucestershire LADO.</p> |
| <p>Female genital mutilation (FGM)</p> | <p>Female Genital Mutilation (FGM) comprises all procedures involving partial or total removal or the external female genitalia. FGM is illegal in the UK and as of October 2015 mandatory reporting commenced. If education staff or other professionals discovers that an act FGM appears to have been carried out on a girl under 18 years old there is a statutory duty for them PERSONALLY to report it to the police. http://www.nhs.uk/Conditions/female-genital-mutilation</p> <p>For NHS information and signs of FGM. Any suspicion of FGM should be referred to the Police and social care. All staff have completed the online home office training, 'Female Genital Mutilation: Recognising and Preventing FGM'.</p> |
| <p>Forced marriage</p> | <p>SPOC (Single Point of Contact) for Forced Marriage in Gloucestershire is Acting DI Jo Mercurio (Gloucestershire Constabulary, Public Protection Bureau). UK Forced Marriage Unit fmufco@fco.gov.uk</p> <p>Telephone: 020 7008 015132 Call 999 (police) in an emergency. https://www.gov.uk/stop-forced-marriage for information on Forced Marriage. Visit Home Office website to undertake Forced Marriage e-learning package https://www.gov.uk/forced-marriage</p> |

GSCB one day awareness training delivered by Info buzz www.gscb.org.uk

Please see 'Multi-Agency Practice Guidelines- Handling cases of Forced Marriage' for more information and detail <https://www.gov.uk/forcedmarriage>

All practitioners must be aware of this, that is they may only have one chance to speak to a potential victim and thus they may only have one chance to save a life. This means that all practitioners working within statutory agencies need to be aware of their responsibilities and obligations when they come across forced marriage cases. If the victim is allowed to walk out of the door without support being offered, that one chance might be wasted.

Prevention: Freedom Charity- Aneeta Prem 'But it's not fair' book.
www.freedomcharity.org.uk

The Freedom Charity (UK charity) have a helpline, text facility and app, which can be downloaded to help to provide support and protection for victims of abuse, FGM or forced marriage. They can be contacted on 0845 607 0133 or text 4freedom to 88802 or go to the website to download the app from the app page.

Sexting

<http://www.nspcc.org.uk/preventing-abuse/keeping-children-safe/sexting> (NSPCC website).

Gloucestershire Police have a small sexual exploitation team.

Prevention: 'So you got naked online' (sexting information leaflet produced for pupils by south west grid for learning) can be included in the curriculum.
<https://swgfl.org.uk/products-services/online-safety/resources/so-you-got-naked-online/>

Pupils can be informed that sexting is illegal, but the police have stated that young people should be treated as victims in the first place and not usually face prosecution. The police's priority is those who profit from sexual images of young people, not the victims.

Trafficking

This is a serious crime, which must be reported to Gloucestershire LADO and the Gloucestershire Police. Trafficking can include a young person being moved across the same street to a different address for the purpose of exploitation. It doesn't have to include people, children or young people being moved great distances.

Children who run away (missing persons/missing children)

GSCB Missing Children Protocol <http://www.gscb.org.uk>

Gloucestershire's protocol on partnership working when children and young people run away and go missing from home or care. ASTRA (Gloucestershire): The ASTRA (Alternative Solutions To Running Away) has the primary aim of reducing the incidence of persistent running away across Gloucestershire. The project provides support, advice and information to young people up to eighteen years old who have run away. This might be from a family home, foster home or from a residential unit. ASTRA provides support after the event

to enable a young person to address the causes of running away. The ASTRA project offers young people help and the support required in order to find

Alternative Solutions To Running Away. Freephone Telephone number: 0800-389-4992 EXCLUSIVELY for young people who have run away and have no money. All other callers are asked to use the 'ordinary' number (tel: 01452 541599).

Anyone concerned that a child is missing education (CME) can make a referral to the Education Entitlement and Inclusion team (EEI) at Gloucestershire County Council. Tel: 01452 426960/427360.

Children Missing Education (CME) refers to 'any child of compulsory school age who is not registered at any formally approved education activity e.g. school, alternative provision, elective home education, and has been out of education provision for at least 4 weeks'. CME also includes those children who are missing (family whereabouts unknown), and are usually children who are registered on a school roll / alternative provision. This might be a child who is not at their last known address and either: has not taken up an allocated school place as expected, or has 10 or more days of continuous absence from school without explanation, or left school suddenly and the destination is unknown. It is the responsibility of the Education Entitlement and Inclusion team, on behalf of the Local Authority (LA), to: Collate information on all reported cases of CME of statutory school aged children in Gloucestershire maintained schools, academies, free schools, alternative provision academies and Alternative Provision Schools (APS). The EEI Team will also liaise with partner agencies and other LAs and schools across Britain to track pupils who may be missing education and ensure each child missing education is offered full time education within 2 weeks of the date the LA was informed.

Private fostering

<http://www.gloucestershire.gov.uk/privatefostering>

Gloucestershire County council website information on private fostering. Refer to Gloucestershire Children and Families Helpdesk on 01452 426565 or Gloucestershire Private Fostering Social Worker 01452 427874.

A private fostering arrangement is essentially one that is made without the involvement of a local authority. Private fostering is defined in the Children Act 1989 and occurs when a child or young person under the age of 16 (under 18 if disabled) is cared for and provided with accommodation, for 28 days or more, by someone who is not their parent, guardian or a close relative. (Close relatives are defined as; step-parents, siblings, brothers or sisters of parents or grandparents).

Preventing Radicalisation and Extremism/HATE (PREVENT duty)

Gloucestershire Safeguarding Children's Board
www.gscb.org.

HM Government PREVENT duty: As of 1 July 2015 duty in the Counter-terrorism and security act 2015 for specified authorities (including all schools) to have due regard to the need to prevent people being drawn in to terrorism.

There is a new GSCB PREVENT referral pathway

- www.educateagainsthate.com is the government website providing information and practical advice for parents, teachers and

If you see extremist or terrorist content online please report it via: <https://www.gov.uk/report-terrorism>

schools leaders on protecting children from radicalisation and extremism.

- Gloucestershire Safeguarding Children's Board have published a PREVENT pathway for professionals to refer to.
- All of teachers have had training in how to spot the signs of radicalization and extremism and when to refer to the Channel panels. (Online training).
- Anti-Terrorist Hotline:0800 789 321

The 'Advice on the Prevent duty' written by the Department for Education explains what governors and staff can do if they have any concerns relating to extremism. The Department for Education has also set up a telephone helpline (020 7340 7264) to enable people to raise concerns directly. Concerns can also be raised by email to counter.extremism@education.gsi.gov.uk

Prevention: Foxmoor Primary School teach traditional British values: democracy, rule of law, and respect for others, liberty, tolerance of those with different faiths and beliefs and promotion of 'Britishness'. E-safety is an important aspect of the curriculum to keep pupils safe from radicalisation. Pupils need to understand that radicalisation can be a form of grooming online and understand the notion of propaganda. They need to be taught to be discerning about what they read on the internet as the dangers of speaking to strangers online.

Foxmoor Primary School also seeks to equip parents with the knowledge of how to safeguard their children from radicalisation. 'Let's talk about it' is an excellent website for parents www.ltai.info/ as is www.preventtragedies.co.uk

While it remains very rare for school age children to become involved in extremist activity to the point of committing criminal acts, young people can be exposed to extremist influences or prejudiced views, including via the internet, from an early age. As with other forms of criminality or risk of harm, early intervention is always preferable. Schools, working with other local partners, families and communities, can help support pupils who may be vulnerable as part of wider safeguarding responsibilities.

Other sources of help & information in Gloucestershire:

Gloucestershire MAPPAs (Multi-Agency Public Protection Arrangements) are a set of arrangements to manage the risk posed by the most serious sexual & violent offenders (MAPPAs-eligible offenders) under the provisions of sections 325 to 327B of the Criminal Justice Act 2003. They should be contacted immediately if there is any concern is reported about a serious sexual or violent offender. (Contact- Gloucestershire Constabulary – Tel: 101)

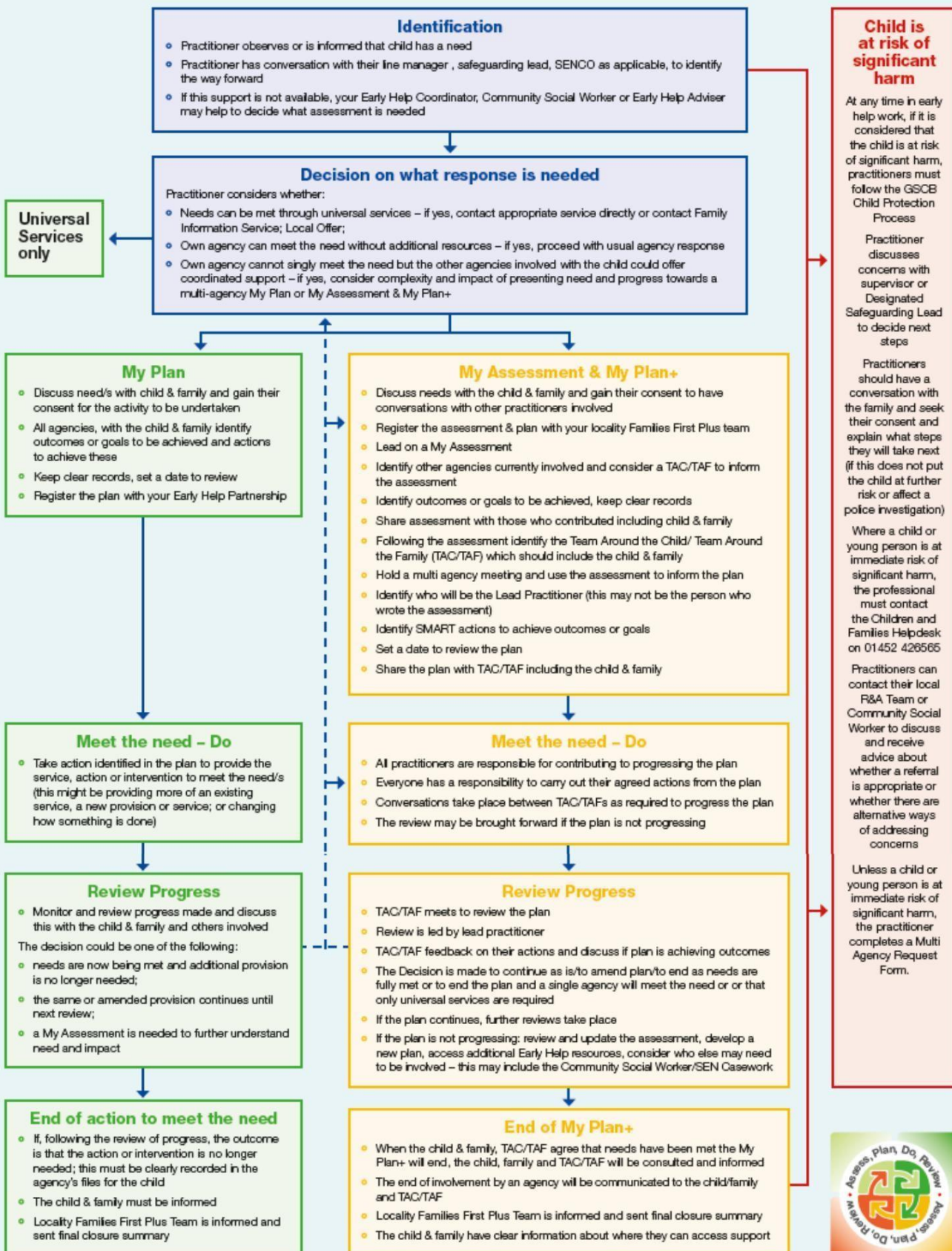
Useful Information - How the Gloucestershire Graduated Pathway is structured.

Graduated Pathway Flowchart – Early Help and Support for Children, Young People and Families What to do and How

Graduated Early Help and Support involves: identification; assessment; planning; providing services; and reviewing the plan.

At any time in early help work, if it is considered that a child is at immediate risk of significant harm, the practitioner must contact the Children & Families Help Desk.

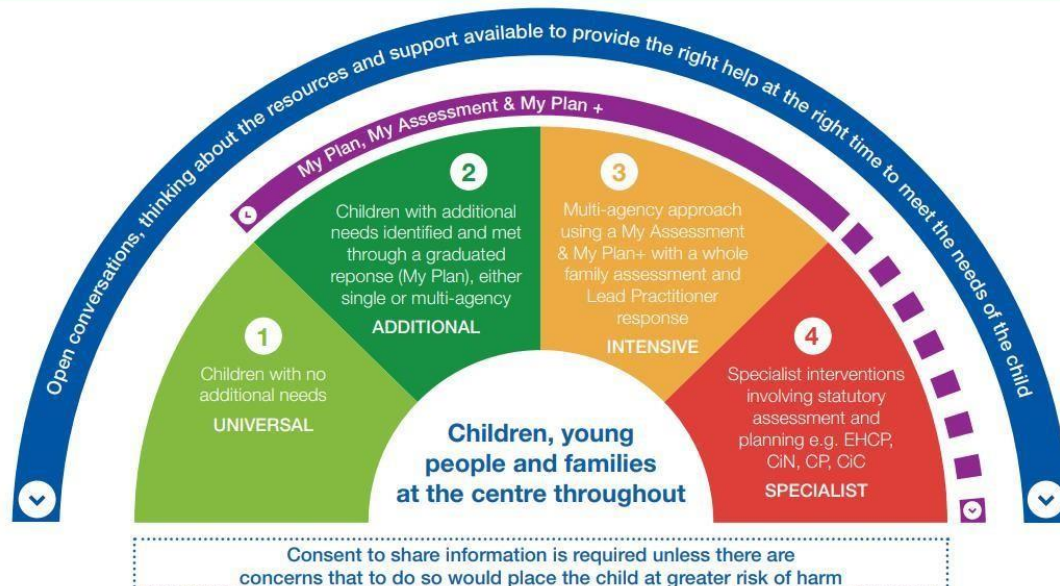
Throughout any work with children, young people and their families, where practitioners have concerns or differences in opinion about the decisions or practice of others that they cannot resolve on their own, they can refer to the Gloucestershire Safeguarding Children Board Escalation Policy.



Useful Information – Safeguarding practice and procedures.

The Windscreen

A diagram to demonstrate the Continuum of Need



If you think a child or young person is at immediate risk of significant harm, contact **The Front Door** on 01452 426565 (option 1) - in an emergency always call 999

All Safeguarding concerns are currently logged in secure files but from April 2019 will be logged on the CPOMS database.

Where a concern can be addressed within school guidelines and procedures, the DSL or DDSL will contact the child's parents or carers and share the information and how the situation will proceed.

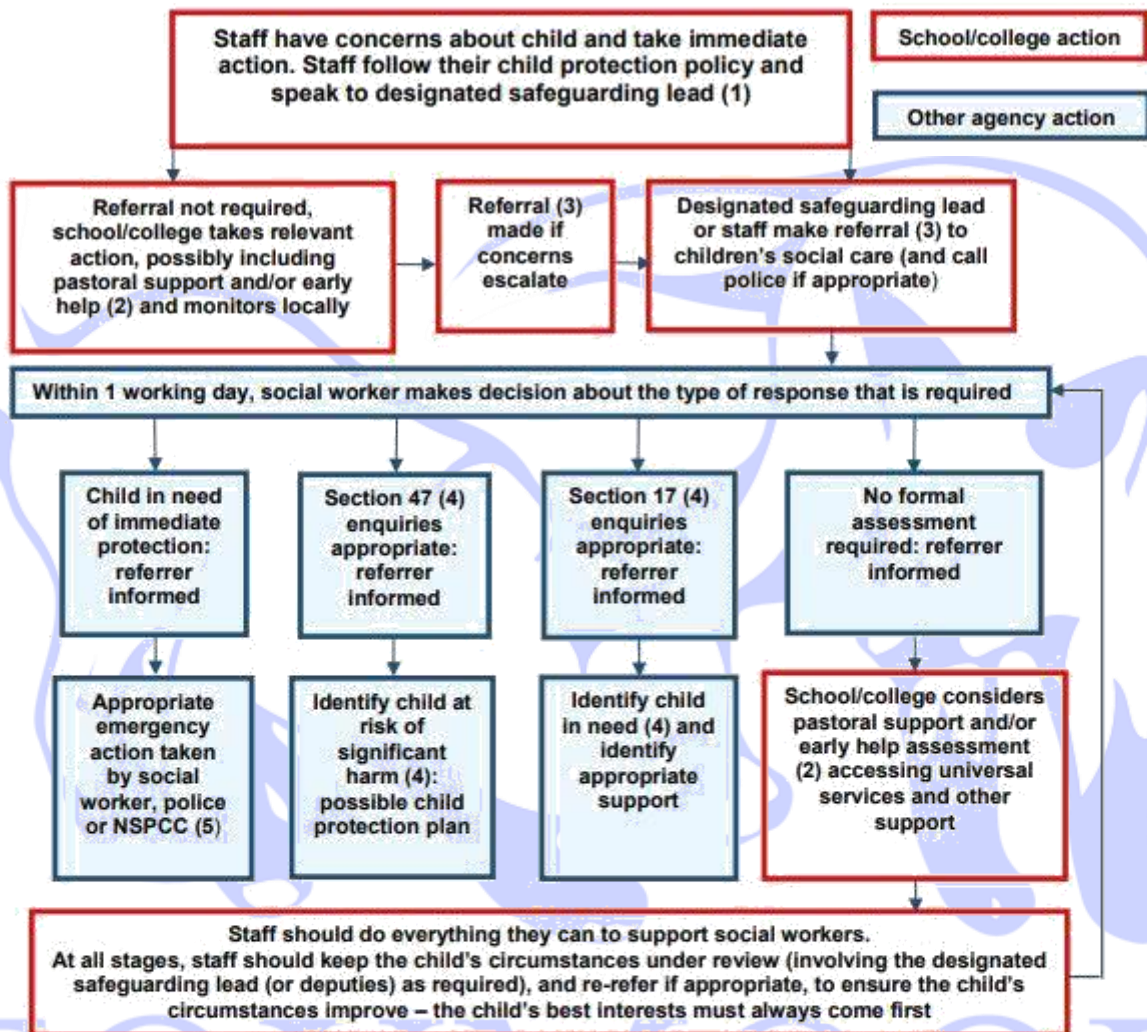
Where a concern is judged require support or intervention from agencies outside the school (using the windscreen above for guidance), the DSL or DDSL will make the referral and will contact the child's parents or carers and share the information and how the situation will proceed. The DSL and DDSL work with relevant agencies and families following the referral.

In some cases, where it is felt that a child is at risk of significant harm, it may be in the child's best interest for the DSL or DDSL not to inform parents or carers and in these cases, strict procedure is followed, as outlined in the Safeguarding policy.

All cases are regularly monitored and updates sought by the DSL and DDSL. All reports and documentation are securely stored.

The diagram overleaf, taken from 'Keeping Children Safe in Education, statutory guidance for schools and colleges.' (September 2018) shows the action that is taken when a concern suggests that a child has suffered or is likely to suffer harm.

Actions where there are concerns about a child



(1) In cases which also involve a concern or an allegation of abuse against a staff member, see Part Four of this guidance.

(2) Early help means providing support as soon as a problem emerges at any point in a child's life. Where a child would benefit from co-ordinated early help, an early help inter-agency assessment should be arranged. Chapter one of [Working Together to Safeguard Children](#) provides detailed guidance on the early help process.

(3) Referrals should follow the process set out in the local threshold document and local protocol for assessment. Chapter one of [Working Together to Safeguard Children](#).

(4) Under the Children Act 1989, local authorities are required to provide services for children in need for the purposes of safeguarding and promoting their welfare. Children in need may be assessed under section 17 of the Children Act 1989. Under section 47 of the Children Act 1989, where a local authority has reasonable cause to suspect that a child is suffering or likely to suffer significant harm, it has a duty to make enquiries to decide whether to take action to safeguard or promote the child's welfare. Full details are in Chapter one of [Working Together to Safeguard Children](#).

(5) This could include applying for an Emergency Protection Order (EPO).