



Dear Parents/Carers,

We have been delighted with how hard the children have worked this half term. They have shown how resilient they are. The children are a credit to each and every one of you.

I would like to say a huge thank you to all of the staff. As ever, they have gone above and beyond to ensure that the quality of education your children receive is of the highest quality.

I hope you all have a happy and safe half-term break and we look forward to seeing the children back in school on Monday 2nd November.

SCHOOL PHOTOGRAPHS

On Tuesday 10th November, DSP Photography will once again be taking school photographs. If you have more than one child in school they will be photographed together, however, if you would also like individual photos then please send a note into your child's teacher. Unfortunately, due to Covid restrictions we will be unable to accommodate younger/older children not currently at Foxmoor. We have received a full risk assessment provided by DSP photography and every precaution will be taken to ensure the safety of the children. If you have any queries or concerns please contact the school office.

POSITIVE TEST RESULTS DURING HALF TERM

If any member of your family has a positive test result during half term then please inform school by emailing finance@foxmoor.gloucs.sch.uk This will allow us to take advice from Public Health England as to any procedures we would need to put in place. Thank you for your support with this.

REMINDER

Just a quick reminder that it is school policy that children are not permitted to have dyed/coloured hair in school. Can parents also make sure that children wear the correct school uniform. Thank you for your support with this.

READING BENCH

I would like to say a huge thank you to Mrs Hillman for her leaving gift of a reading bench. The children will love using this especially in the warmer months.

SCHOOL ARRIVAL

Thank you to all parents for adhering to the new start/collection times. These will continue after half term. It is essential that all children arrive and are collected at their allocated time (see website for allocated times) so that we can keep numbers of parents and children at the school gate to a minimum. There have been an increasing number of children arriving late. Staff are monitoring the doors to let children in but cannot keep the doors open waiting for late arrivals. After half term, the school office will be contacting parents directly if their child is continually late.

FOODBANK DONATIONS

Thank you to everyone for the harvest food donations. The food was delivered to the Stroud Foodbank on Wednesday. They were extremely thankful and very impressed with the amount of food that had been donated.

PARKING

Can I remind all parents and carers that no vehicles are allowed in the staff car park at any time. Can I also ask parents not to park or drop off on the zig zag lines. This is to keep the children safe.

WARM CLOTHES IN SCHOOL

As part of the government guidelines, we have to keep windows and some external doors open to aid ventilation. As the weather becomes colder, it is important that all children have warm clothing in school. If you would like to send your child in with extra layers then please do so. This could include a fleece or gilet.

VISIT FROM PC WEEDON

We were delighted to welcome PC Weedon (Stroud Local Policing Team) into school on Tuesday. He talked to the children in Years 3 and 5 about age appropriate social media platforms and gaming. If parents require any information regarding social media for children, then please look in the parent's section of the school website. PC Weedon will be visiting the children in Year 6 in November.

INFECTION PREVENTION AND RESPONSE

It is vital that we all work together to minimise the risk of any coronavirus outbreak. The government have issued clear guidance on what to do if anyone within your household has any of the three main coronavirus symptoms. The three main symptoms are fever, a continuous dry cough or loss of sense of smell or taste. Please see the table below for what to do if any member of your household shows any of these symptoms.

What to do if...	Action needed	Return to school when...
My child has coronavirus symptoms	<ul style="list-style-type: none">• Do not come to school• Contact school daily• Self-isolate• Get a test• Inform school immediately about the test result	The test comes back negative
My child tests positive for coronavirus	<ul style="list-style-type: none">• Do not come to school• Contact school daily• Self-isolate for at least 10 days• Inform school immediately about the test result	They can return to school after 10 days even if they have a cough or loss of smell/taste. These symptoms can last for several weeks once the virus has gone
Somebody in my house has coronavirus symptoms	<ul style="list-style-type: none">• Do not come to school• Contact school daily• Self-isolate• Household member to get a test• Inform school immediately about the test result	The household member test is negative.
Somebody in my household tested positive for coronavirus	<ul style="list-style-type: none">• Do not come to school• Contact school daily• Self-isolate for 14 days	The child has completed 14 days of self-isolation
NHS test and trace has identified my child as a 'close contact' of somebody with symptoms or confirmed coronavirus	<ul style="list-style-type: none">• Do not come to school• Contact school daily• Self-isolate for 14 days	The child has completed 14 days of self-isolation

<p>We/my child has travelled and has to self-isolate as part of a period of quarantine</p>	<ul style="list-style-type: none"> • Do not take unauthorised leave in term time • Consider quarantine requirements and FCO advice when booking travel • Provide information to school as per attendance policy <p>Returning from a destination where quarantine period is required</p> <ul style="list-style-type: none"> • Do not come to school • Contact school daily • Self-isolate for 14 days 	<p>The quarantine period of 14 days has been completed</p>
<p>We have received medical advice that my child must resume shielding</p>	<ul style="list-style-type: none"> • Do not come to school • Contact school to discuss distance learning • Shield until you are informed that restrictions are lifted and shielding is paused again 	<p>Medical professional informs you that restrictions have been lifted and your child can return to school again</p>

HOME LEARNING

If your child has one of the three main coronavirus symptoms and they are not attending school whilst awaiting test results we ask that, in the short term, you encourage your child to read, practise their spellings and times tables while they are at home.

In the event of a class bubble having to isolate or the school is instructed to close in full, we will switch to remote learning. In these circumstances, teachers will be setting work weekly with direct links to pre-recorded lessons and associated activities. Lessons and activities will mirror what would be being taught face-to-face in the classroom. Parents will be able to communicate with teachers directly on a daily basis via email.

If you have any problems accessing digital resources please contact the school office.

Richard Bridgewater
Headteacher

INFORMATION

School and Governor Contact:

01453 757251

Facebook @foxmoorprimaryschool

Family Lives Helpline:

0808 800 2222

www.familylives.org

Early Help Partnership Families First Plus Stroud:

01452 328130

www.glosfamiliesdirectory.org.uk

School Nurse Contact:

0300 421 8959

Headteacher: Mr Richard Bridgewater

Early Years and Childcare:

0800 542 02 02

Gloucestershire County Council:

www.gloucestershire.gov.uk

Friends of Foxmoor (FOF)

Facebook @friendsoffoxmoorschool

Contact: Natalie Hombrado via the school office

DATES FOR YOUR DIARY

Please find below a list of current visits planned and some important dates. I hope you find it useful. Further dates will be added in subsequent newsletters.

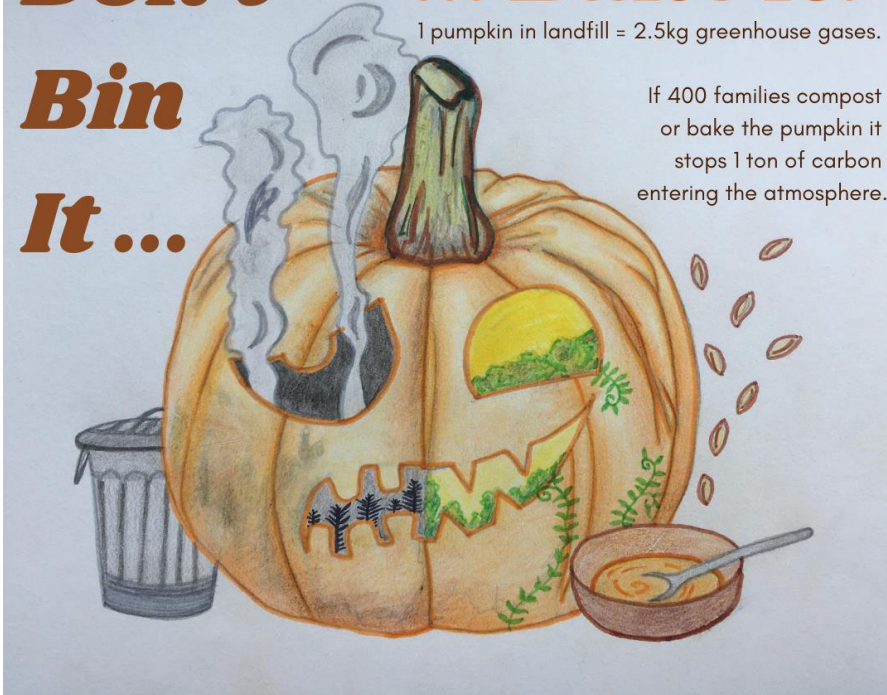
Autumn 2020	Term 1
1 st September	Inset Day
2 nd September	Inset Day
3 rd September	Children return to school
21 st October	Harvest Festival - No assembly. Details to follow
23 rd October	Last day of Term 1
Autumn 2020	Term 2
2 nd November	First day of Term 2
18 th November	Parent's Evening
25 th November	Parent's Evening
2 nd December	Parent's Evening
17 th December	Last day of Term 2
18 th December	Inset Day
Spring 2021	Term 3
4 th January	First day of Term 3
12 th February	Last day of Term 3
Spring 2021	Term 4
22 nd February	First day of Term 4
1 st April	Last day of Term 4
Summer 2021	Term 5
19 th April	First day of Term 5
3 rd May	May Day Bank Holiday
10 th May	KS2 SATs Week
27 th May	Last day of Term 5 for children
28 th May	Inset Day
Summer 2021	Term 6
7 th June	First day of Term 6
20 th July	Last day of Term 6 for children
21 st July	Inset Day

**Don't
Bin
It ...**

... Bake It!

1 pumpkin in landfill = 2.5kg greenhouse gases.

If 400 families compost
or bake the pumpkin it
stops 1 ton of carbon
entering the atmosphere.



**EARTH
PROTECTOR
COMMUNITIES**

THE LONG TABLE

Stroudco
your local
online grocer

Landwise

**Stroud
Nature**